

WC101369

## LANGLEY SINGLE DOOR CABINET



### MATERIAL

Aluminium  
Mirrored Glass Doors

### FINISH / COLOUR

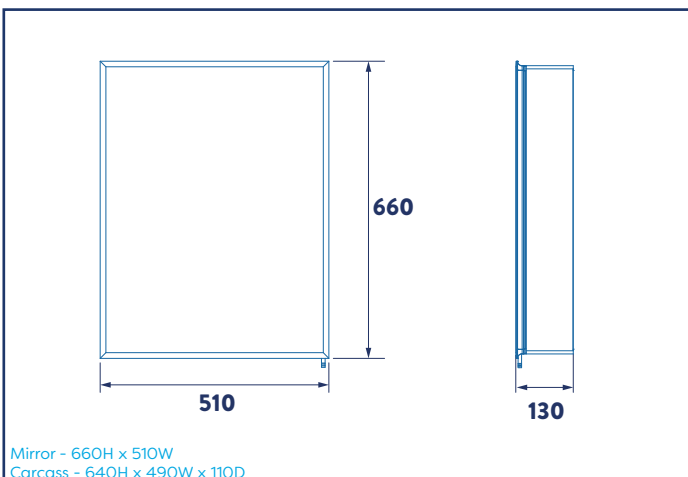
Bright Anodised

### FREQUENTLY USED APPLICATIONS

Commercial Washrooms  
Hotels  
Domestic Dwellings

### FEATURES

- Aluminium cabinet with a double sided mirrored door, with bevel on the front mirror glass.
- Mirrored internal backing panel.
- Left or right hand door opening.
- Two adjustable toughened glass shelves.
- 165 Degree sprung hinges for increased accessibility.
- Recessed or surface mounted configuration.
- Supplied fully assembled for ease of installation.
- Easy to install Hang 'n' Lock system.
- All fixtures and fittings included.



### PERFORMANCE STANDARDS

Meets Performance Requirements Of Service Condition 2.

BS EN ISO 9221:2017 - Corrosion Resistant (NSS 48hr Salt Spray, Min. Grade9).

### CARE AND MAINTENANCE

Clean surfaces with a damp cloth and wipe dry using a soft cloth.

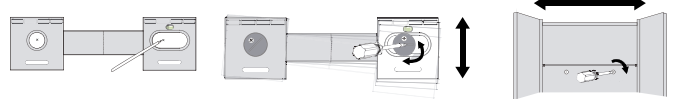
Do not use chemical or abrasive cleaners as these may damage the surface finish.

### GUARANTEE

Consumer Statutory Rights Apply

#### HANG 'N' LOCK

Easy Installation Bracket.  
Fully Adjustable.  
One Person Installation.



Printed material, designs and packaging are protected by copyright and design rights.